

# 203 S

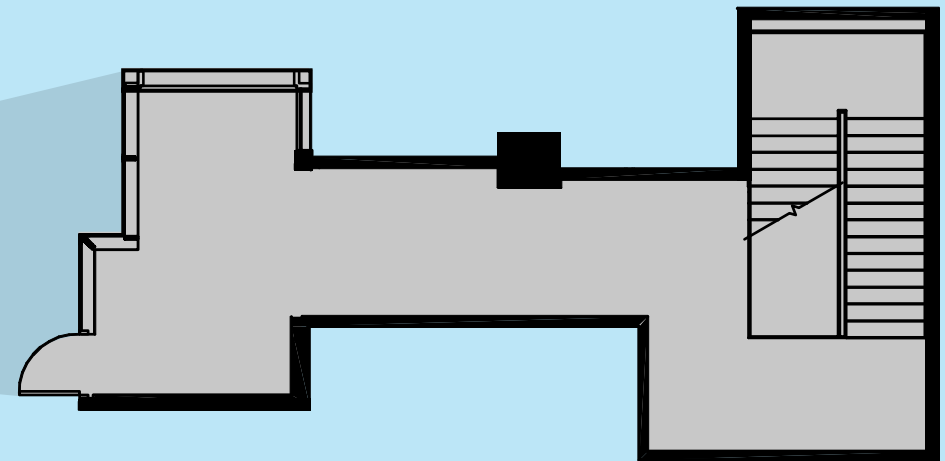
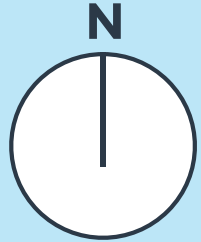
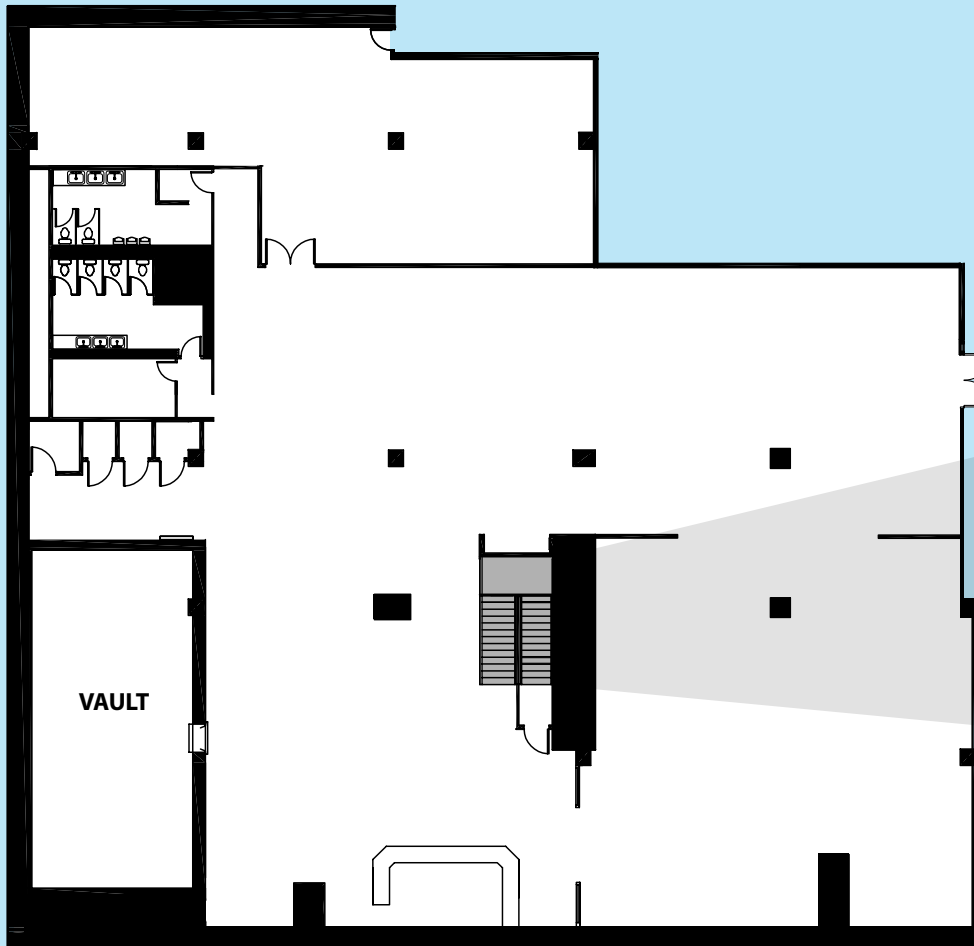
**STATE STREET**  
at 11 E Adams Street

**SUITE LL100**  
12,689 RSF

State Street entrance  
Underground bank vault  
+/- 30' x 45'  
Large open space plan

Black Iron available  
Build-to-suite available  
Existing restrooms &  
changing rooms

Lofted ceilings  
High Speed Internet  
access with multiple  
telecom providers



Private Street Entrance

**CANDICE WELLS**

EVP | Director of Retail Leasing  
312.884.5452 | cwells@marcrealty.com

55 E Jackson Blvd, Suite 500  
Chicago, IL 60604



Exceptional Value  
Remarkable Locations