

8 South Michigan Avenue

Spec Spaces Available
on Michigan Avenue

800 - 1,350 RSF

Joe Storiz

Senior Managing Director

312-994-5656

jstoriz@marcrealty.com



Exceptional Value
Remarkable Locations





A One-Of-A-Kind Location:

The Willoughby Tower at 8 South Michigan Avenue is built in a classic Gothic architectural style and is located in the Historic Michigan Boulevard District, overlooking the heart of Millennium Park.

Adjacent to The Chicago Athletic Association (which boasts Cindy's Rooftop, voted one of the best rooftop bars in Chicago), the Willoughby Tower is within walking distance to The Art Institute of Chicago, Target, and Block 37 shopping mall.

Building Features:

The Willoughby Tower features on-site property management, 24/7 manned building security, marble lobby, building conferencing facility, and indoor bike parking.

MAP KEY



CTA STOP



PARKING GARAGE



TRAIN STATION



LANDMARK



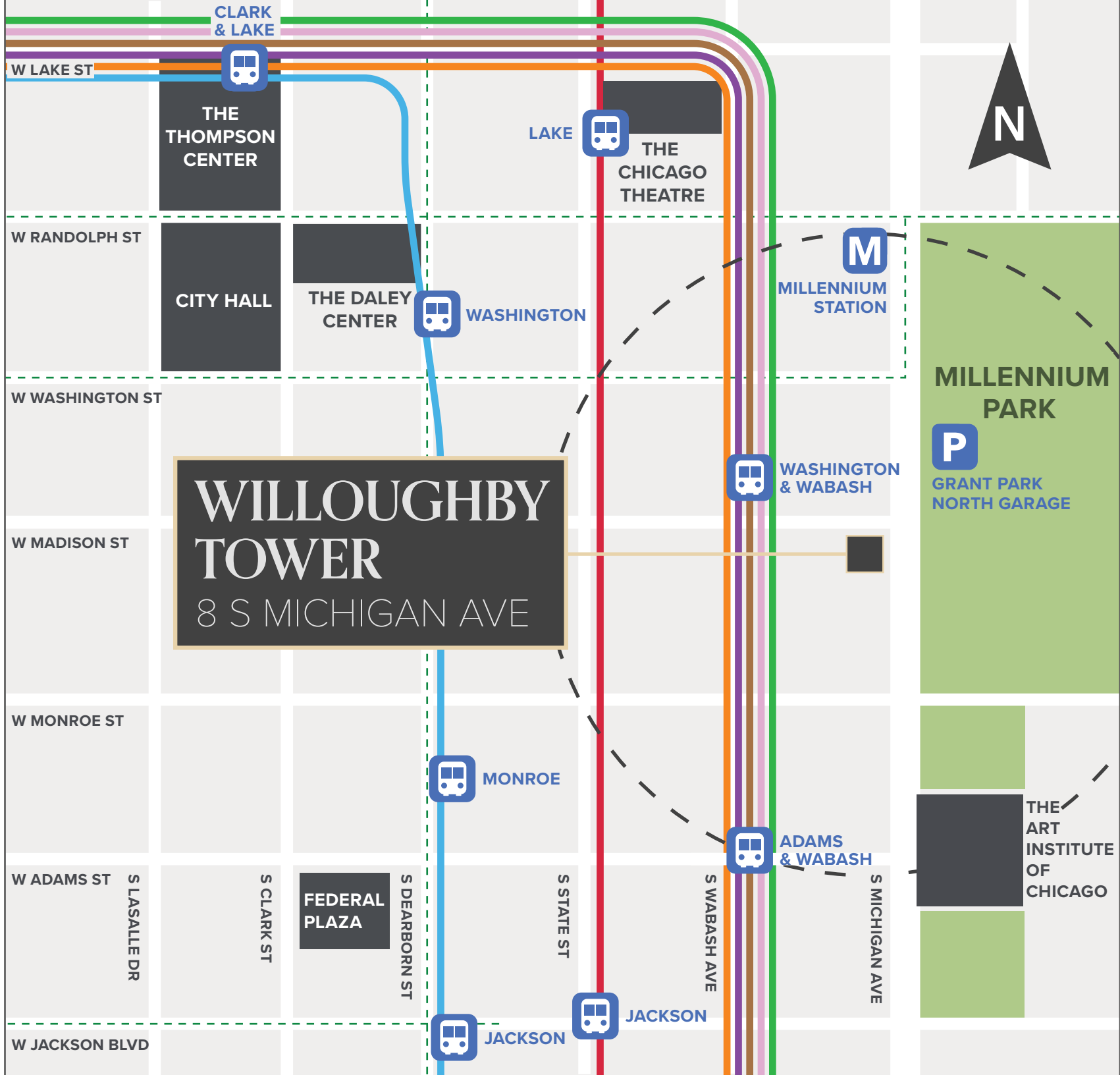
BIKE LANE



5 MINUTE WALK RADIUS

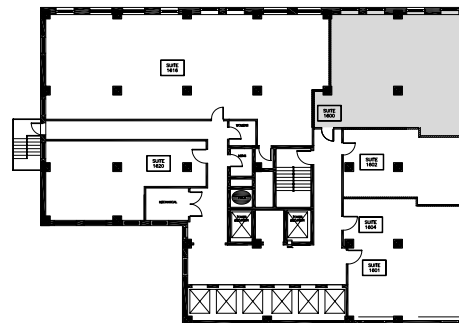
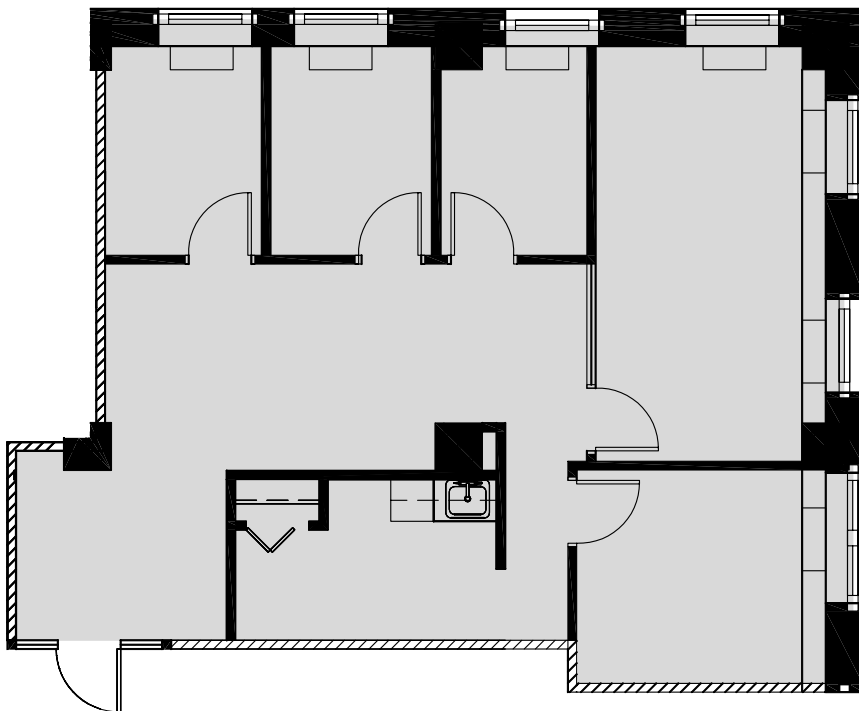


'L' LINE



SUITE 1600

1,348 RSF



JOE STORIZ

Senior Managing Director
312.994.5656 | jstoriz@marcrealty.com

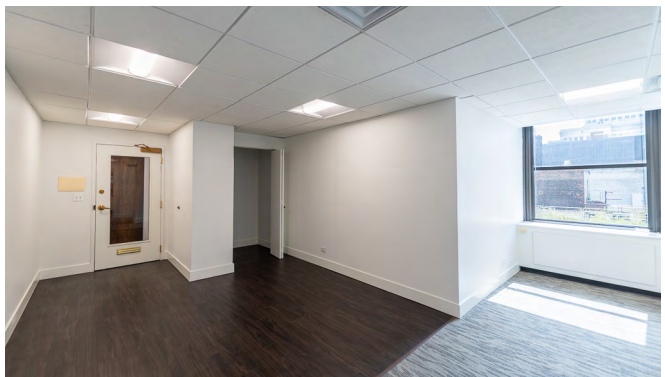
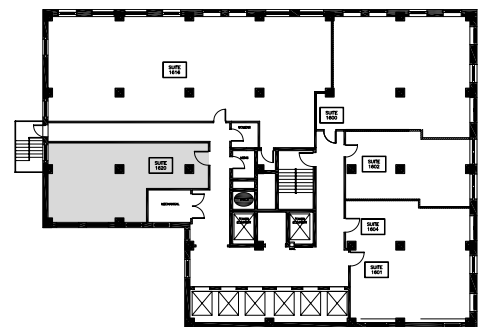
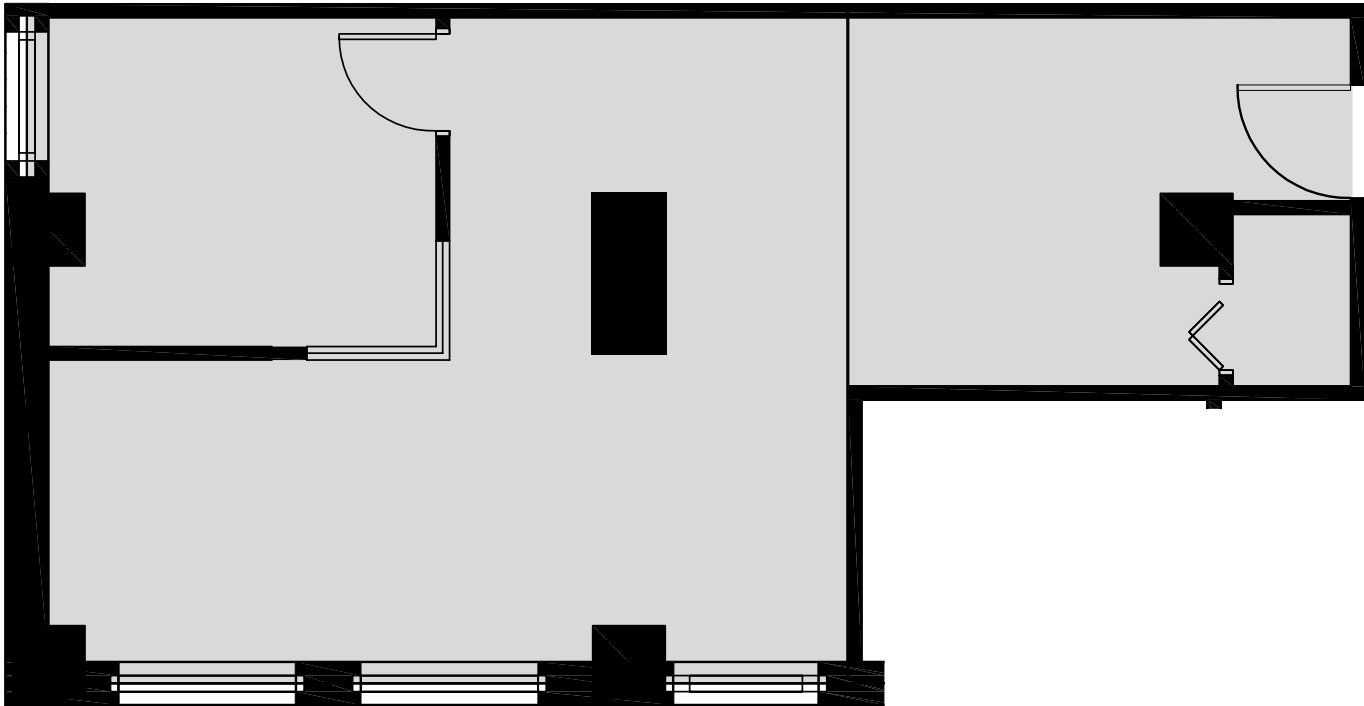
55 E Jackson Blvd, Suite 500
Chicago, IL 60604



Exceptional Value
Remarkable Locations

SUITE 1620

806 RSF



JOE STORIZ
Senior Managing Director
312.994.5656 | jstoriz@marcrealty.com

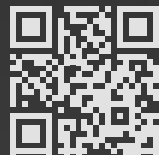
55 E Jackson Blvd, Suite 500
Chicago, IL 60604

MR
MARC REALTY
Exceptional Value
Remarkable Locations

THE BEST LOCATED BUILDINGS **CHICAGO**

Striving to deliver the highest level of service within all aspects of our business.

We pride ourselves in having a strong local knowledge of the real estate market with an equally strong understanding of our tenant's business needs. This allows us to better serve our individual clients by matching up their unique requirements with the best real estate decisions.



**MORE SPACES AVAILABLE
AT MARCREALTY.COM**

JOE STORIZ

Senior Managing Director
312.994.5656 | jstoriz@marcrealty.com

55 E Jackson Blvd, Suite 500
Chicago, IL 60604



Exceptional Value
Remarkable Locations