

29

east madison st

Joe Storiz
Senior Managing Director
312-994-5656
jstoriz@marcrealty.com



Exceptional Value
Remarkable Locations

29

east madison st

THE HEYWORTH BUILDING

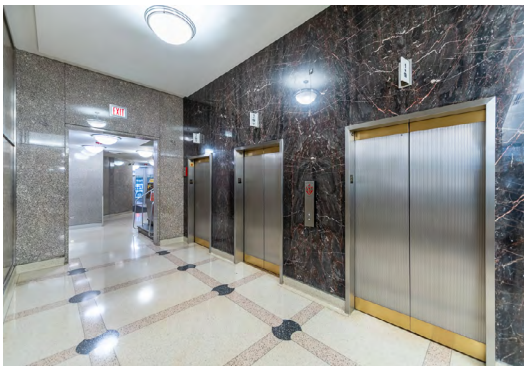
Located in the heart of the Jeweler's District and within walking distance to the Daley Center and Federal Plaza Square, the Heyworth Building features 24/7 on-site security and property management, conferencing facility, and indoor bike parking.

Within blocks of Millennium Park, the Art Institute of Chicago, the Theatre District, State Street Shopping, the Chicago Cultural Center, and City Hall.

Retailers in the building include Huntington Bank, Panda Express, Linxia Beauty, and Hanabusa Cafe,








Abundant parking available at Millennium Park and nearby city garages. Within walking distance of public transportation (Loop Link, Buses, "L", Metra Train Stations and DIVVY).





29

east madison st

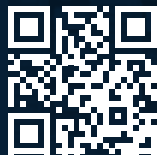
-  CTA STOP
-  PARKING GARAGE
-  TRAIN STATION
-  LANDMARK
-  BIKE LANE
-  5 MINUTE WALK RADIUS
-  'L' LINE



THE BEST LOCATED BUILDINGS

CHICAGO

Striving to deliver the highest level of service within all aspects of our business. We pride ourselves in having a strong local knowledge of the real estate market with an equally strong understanding of our tenant's business needs. This allows us to better serve our individual clients by matching up their unique requirements with the best real estate decisions.



**MORE SPACES AVAILABLE
AT MARCREALTY.COM**

JOE STORIZ

Senior Managing Director
312.994.5656 | jstoriz@marcrealty.com

55 E Jackson Blvd, Suite 500
Chicago, IL 60604



Exceptional Value
Remarkable Locations