

PRIME RETAIL LOCATIONS

203 S. STATE STREET
at 11 E Adams Street, Chicago, IL

CANDICE WELLS
312.884.5452 | cwells@marcrealty.com

AVAILABLE NOW

IDEAL LOCATION FOR:

Retail, tech, non-profit, or established business with specialized security needs.



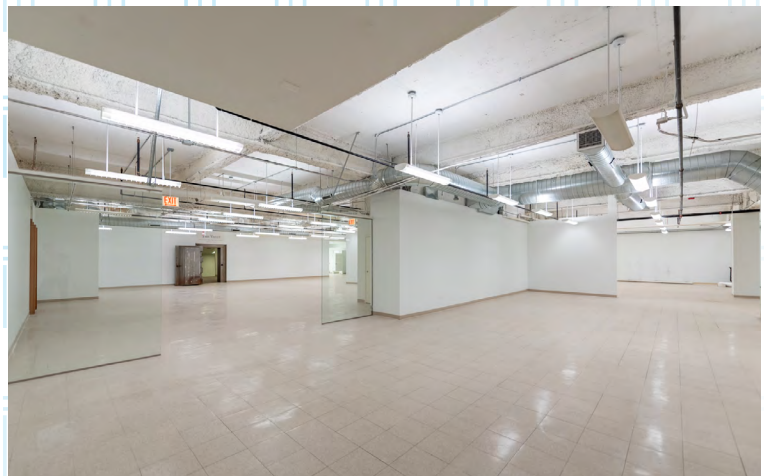
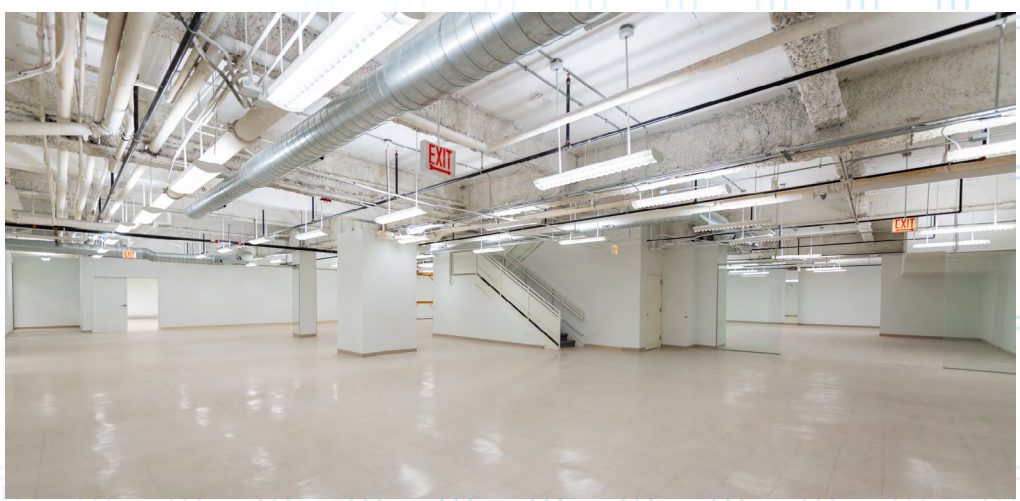
SUITE LL100

12,689 RSF

Availability: Immediate

Term: 5-10 Years

Rate: \$25.00/RSF NNN



SPACE HIGHLIGHTS

- Underground bank vault +/- 30' x 45'
- Large open space plan
- Black Iron available
- Build-to-suite available
- Existing restrooms & changing rooms
- Lofted ceilings

SUITE 110

5,931 RSF

Availability: Immediate

Term: 5-10 Years

Rate: \$85.00/RSF NNN



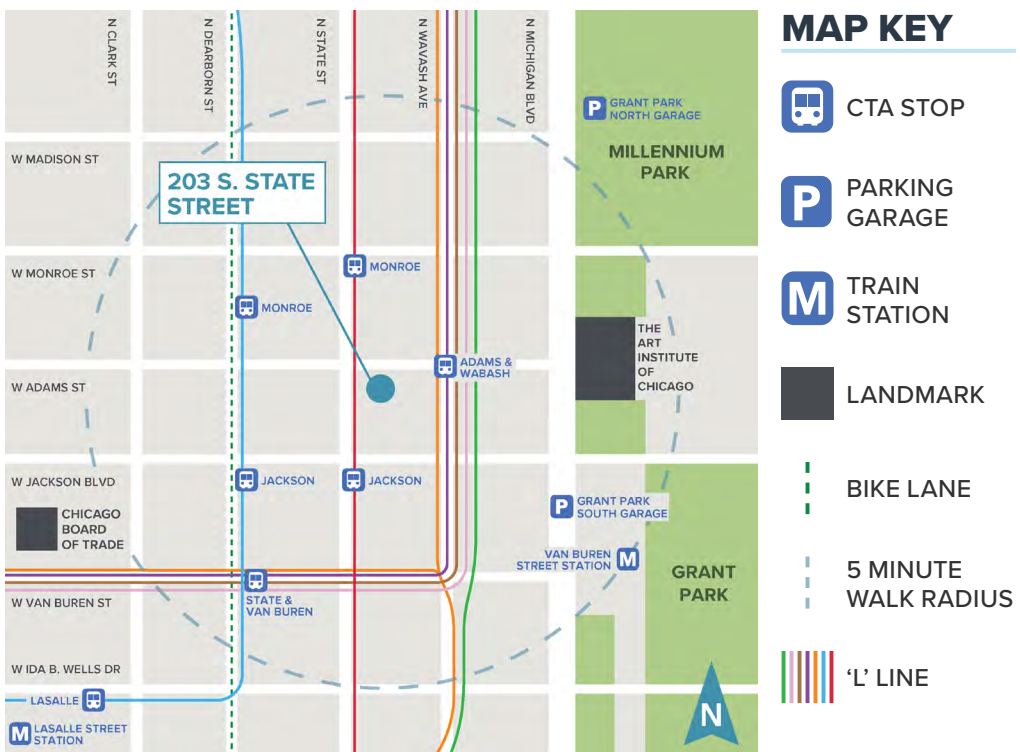
SPACE HIGHLIGHTS

- Highly visible prime State Street Location
- White box/open space plan
- 26'5" linear frontage on State Street
- Build-to-suite custom design options

AREA HIGHLIGHTS

Within blocks of Millennium Park, Grant Park, the Art Institute of Chicago, and the Chicago Cultural Center. Within blocks of the Financial District, Federal buildings and DePaul Campus.

Abundant parking available at Millennium Park and city garages. Within walking distance of public transportation (Loop Link, Buses, "L", Metra Train Stations and DIVVY).



CANDICE WELLS
EVP | Director of Retail Leasing
312.884.5452 | cwells@marcrealty.com

55 E Jackson Blvd, Suite 500
Chicago, IL 60604