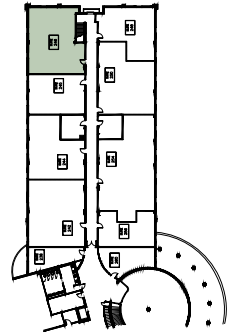
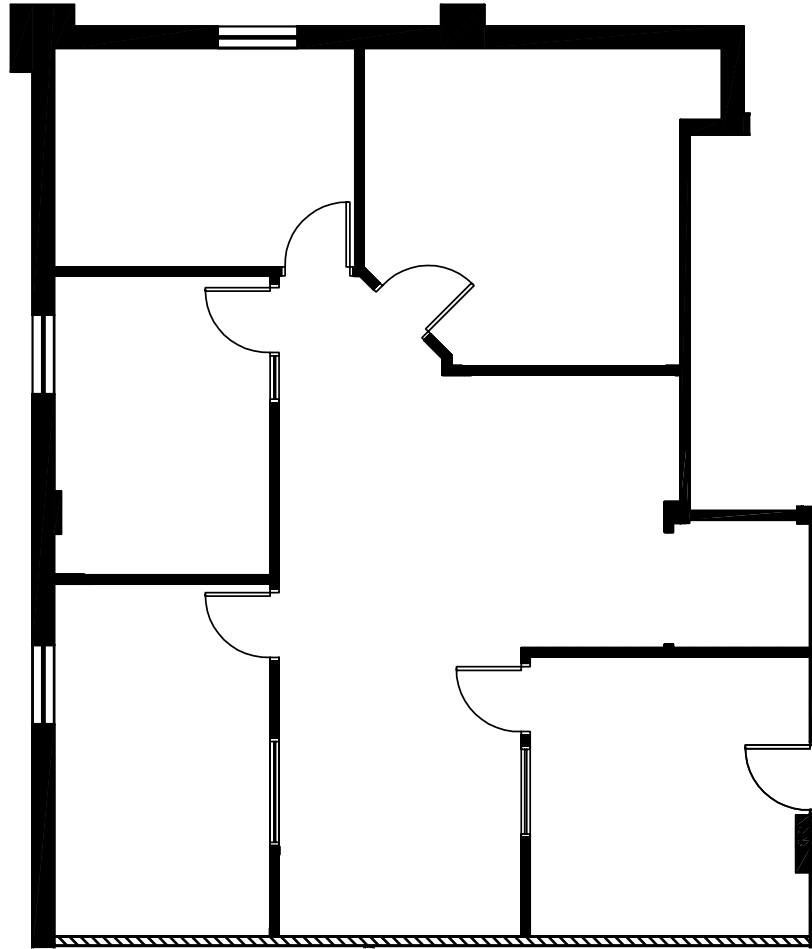
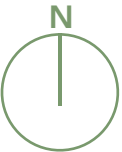


# 2720

— R I V E R   R O A D —  
DES PLAINES, IL



**SUITE 246**  
1,707 RSF



**YASMIN AURORA**  
847.330.1300  
yaurora@marcrealty.com



Exceptional Value  
Remarkable Locations

All information contained herein is from sources deemed reliable and is submitted subject to errors, omissions and to change of price or terms without notice. There is common ownership of the building or buildings referenced herein and Marc Realty LLC | JA